

"FORMING the Future"



**10**  
MILLION  
HOUSING

**3000**  
PROJECTS

**70**  
COUNTRIES

**6**  
CONTINENTS

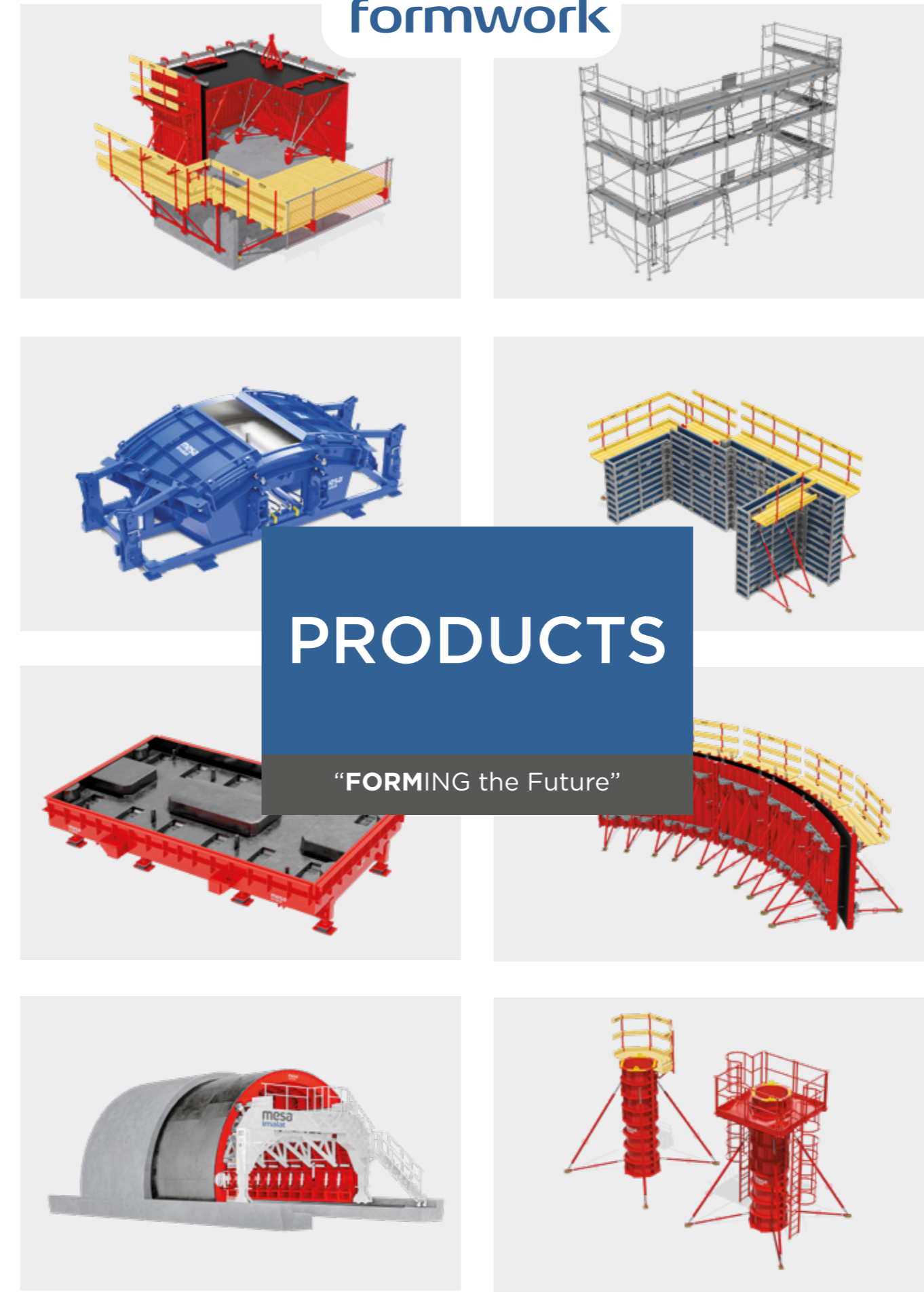
[www.mesaformwork.com](http://www.mesaformwork.com)

**mesa**  
formwork

ME-SA İMALAT SAN. ve TİC. A.Ş.  
Mustafa Kemal Mah. Kayı CAD.  
76/A Yenikent 06946  
Sincan / Ankara / TÜRKİYE  
Tel : +90 (312) 277 33 00  
Fax : +90 (312) 277 37 11  
info@mesaformwork.com  
[www.mesaformwork.com](http://www.mesaformwork.com)



**mesa**  
formwork



**PRODUCTS**

"FORMING the Future"

[www.mesaformwork.com](http://www.mesaformwork.com)

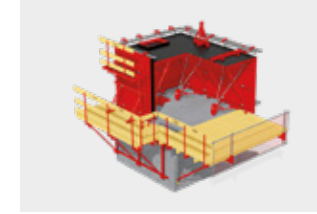
"FORMING the Future"



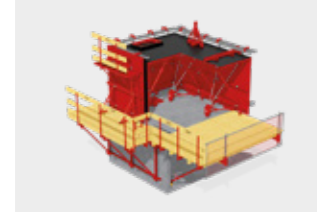
WORLD'S NO.1  
TUNNEL  
FORMWORK  
MANUFACTURER

[www.mesaformwork.com](http://www.mesaformwork.com)

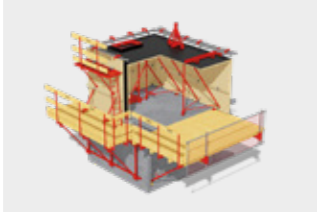
## TUNNEL FORM SYSTEMS



**ERTF**  
Modular Tunnel Form System

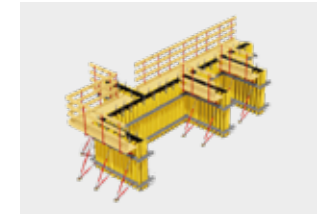


**MKTf**  
Modified Tunnel Form System

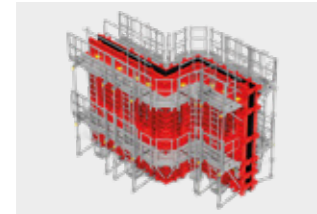


**TRTF**  
Classic Tunnel Form System

## WALL FORM SYSTEMS



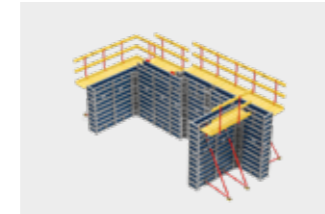
**H2OP**  
Plywood Faced Wall Form System



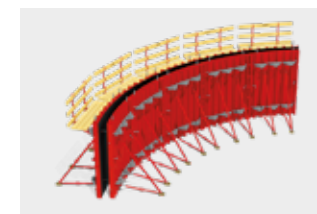
**FRWF**  
Steel Faced Wall Form System



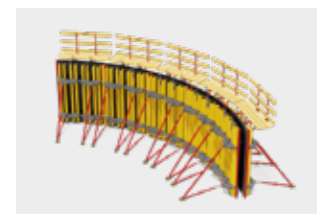
**REVOLA**  
Steel Framed Wall Form System



**LOGICA**  
Steel Framed Wall Form System

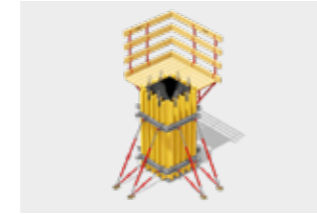


**FLEXP**  
Steel Faced Adjustable Circular Wall Form System

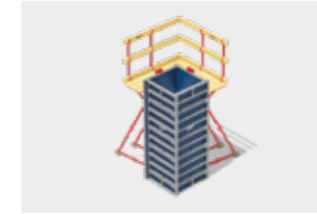


**PLEXP**  
Plywood Faced Adjustable Circular Wall Form System

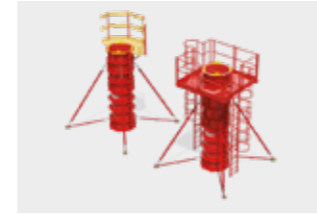
## COLUMN FORM SYSTEMS



**H20/P**  
Plywood Faced Column Form System



**LOGICA**  
Steel framed Column Form System



**STILO**  
Steel faced Circular Column Form System



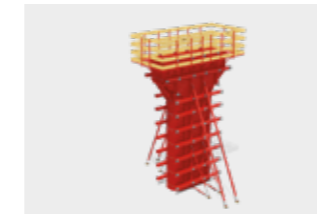
**REVOLA**  
Steel framed Column Form System



**PIER**  
Special Steel faced Column Form

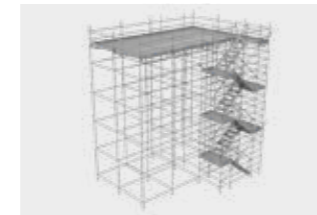


**FORKED COLUMN**  
Special Steel faced Column Form



**PIER**  
Special Steel faced Column Form

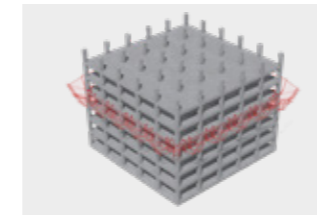
## FACADE AND ACCESS SCAFFOLDING SYSTEMS



**MESA CUPLOCK**  
Stair-Cup Type Facade / Working Scaffolding System

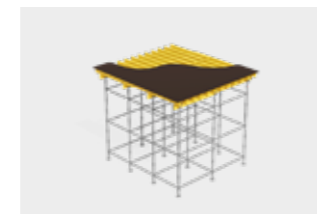


**MESA AL70**  
Facade Scaffolding System



**MESA SAFE**  
Construction Safety System

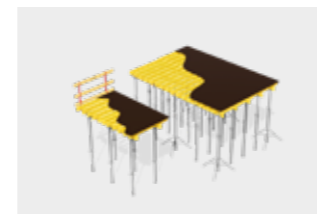
## SLAB FORM - SHORING SYSTEMS



**MESA LOCK**  
Cup lock Shoring System



**MESA FLEX**  
Mesa Flex Shoring and Table Formwork System

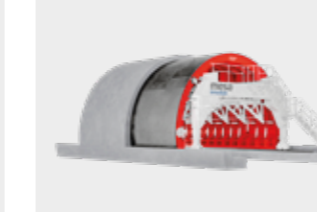


**MESA PROP**  
Adjustable Prop and Table System

## UNDERGROUND TUNNEL FORM SYSTEMS



**TBM TUNNELS**  
Segment Moulds



**NATM TUNNELS**  
Travelling Tunnel Formwork

## SLEEPER MOULD AND SLAB TRACK MOULD



**B07**  
Carousel System Sleeper Mould



**HEAVY HAUL**  
Carousel System Sleeper Mould

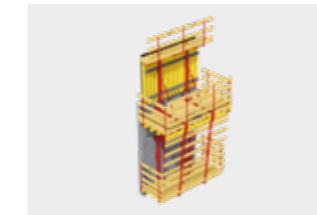


**TURNOUT BEARERS**  
Formwork for the Production of Turnout Bearers

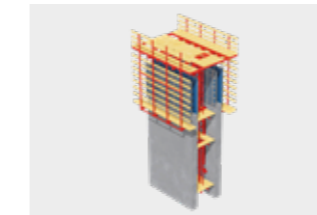


**SLAB TRACK MOULD**

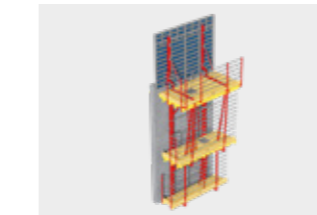
## CLIMBING PLATFORM SYSTEMS



**VCR**  
Crane Lifted Rail Guided Climbing Platform



**HCP**  
Hydraulic Climbing Platform System

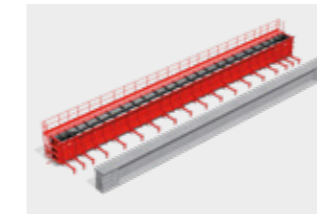


**WRP**  
Climbing Platform System



**WSP**  
Wind Shield Platform

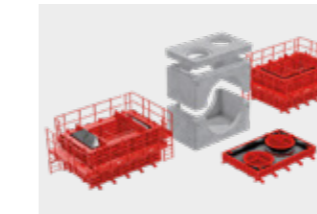
## PRECAST MOULD SYSTEMS



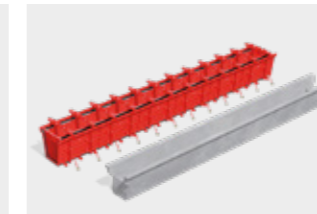
**I BEAM**  
Precast Mould



**RETAINING WALL**  
Precast Mould



**MANHOLE**  
Precast Mould



**V-BEAM BRIDGE**  
Precast Mould

“FORMING the Future”